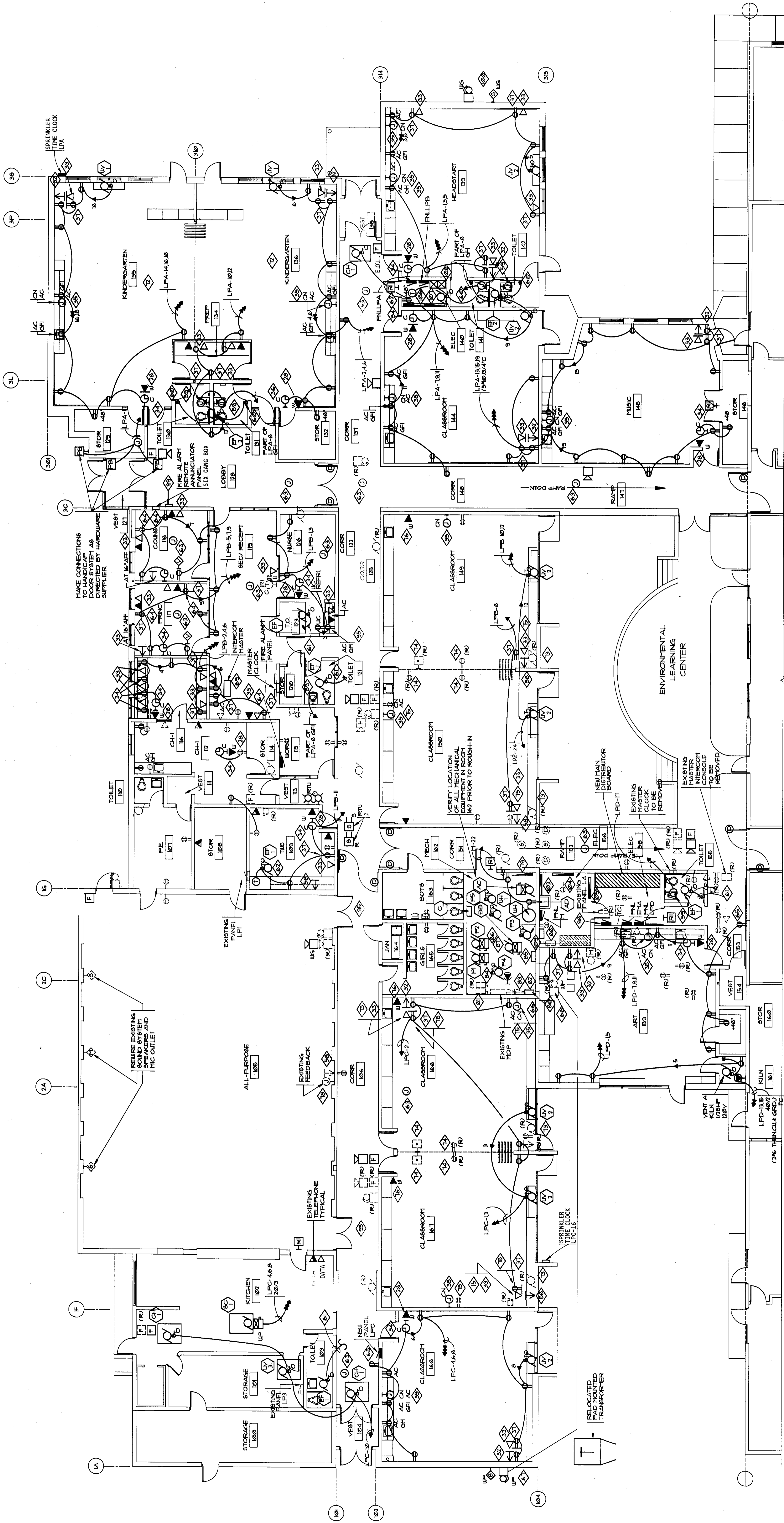


Robb, Brenner, and Breigh, Inc
 125 S. Hayes - Suite 880
 Fort Collins, CO 80521

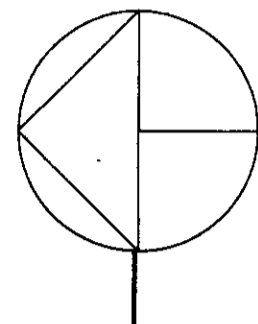


JOB NUMBER	915
DRAWN	KAC/RLH
CHECKED	RB
ISSUE	1 OCT 1982
REVISIONS	NO REVISIONS
SHEET NAME	POWER FLOOR PLAN NORTH FOD
SHEET NUMBER	16.3

ELECTRICAL ENGINEERS
R. J. MCINTYRE AND ASSOCIATES, INC.
 1515 37TH AVENUE NORTH SUITE 202
 GREELEY, COLORADO 80639
 (303) 441-3000 - SERVICE (303) 441-1444



THIS RECORD DRAWING HAS BEEN PREPARED BY THE ENGINEER OR ARCHITECT AND IS NOT TO BE USED FOR ANY OTHER PURPOSES. WHILE THIS INFORMATION IS BEING PROVIDED FOR YOUR INFORMATION, THE DESIGN PROFESSIONAL CANNOT BE RESPONSIBLE FOR THE ACCURACY OF THIS RECORD DRAWING WHICH MAY HAVE BEEN REPRODUCED OR TRANSMITTED IN ANY FORM OR BY ANY MEANS, ELECTRONIC OR MECHANICAL, INCLUDING PHOTOCOPYING, RECORDING, OR BY ANY INFORMATION STORAGE AND RETRIEVAL SYSTEM. THE USER OF THIS RECORD DRAWING IS ADVISED TO VERIFY THE ACCURACY OF ITS CONTENTS BEFORE APPLYING IT FOR ANY PURPOSE.



POWER PLAN-NORTH
 1/8" = 1'-0"

MAKE CONNECTIONS TO HANDICAP DOOR SYSTEM AS DIRECTED BY HARDWARE SUPPLIER.

VERIFY LOCATION OF ALL MECHANICAL PARTS OF SYSTEM PRIOR TO ROUGH-IN.

REUSE EXISTING SOUND SYSTEM SPEAKERS AND MIC OUTLET.

EXISTING TELEPHONE TYPICAL.

RELOCATED TRANSFORMER.

ENVIRONMENTAL LEARNING CENTER.